

# SHIMANO®

## SHIMANO EUROPA

Industrieweg 24 NL-8071 CT Nunspeetâ Holland  
Phone 31-3412-72222

## SHIMANO AMERICAN CORPORATION

One Holland Irvine CA 92618 U.S.A.  
Phone 949-951-5003

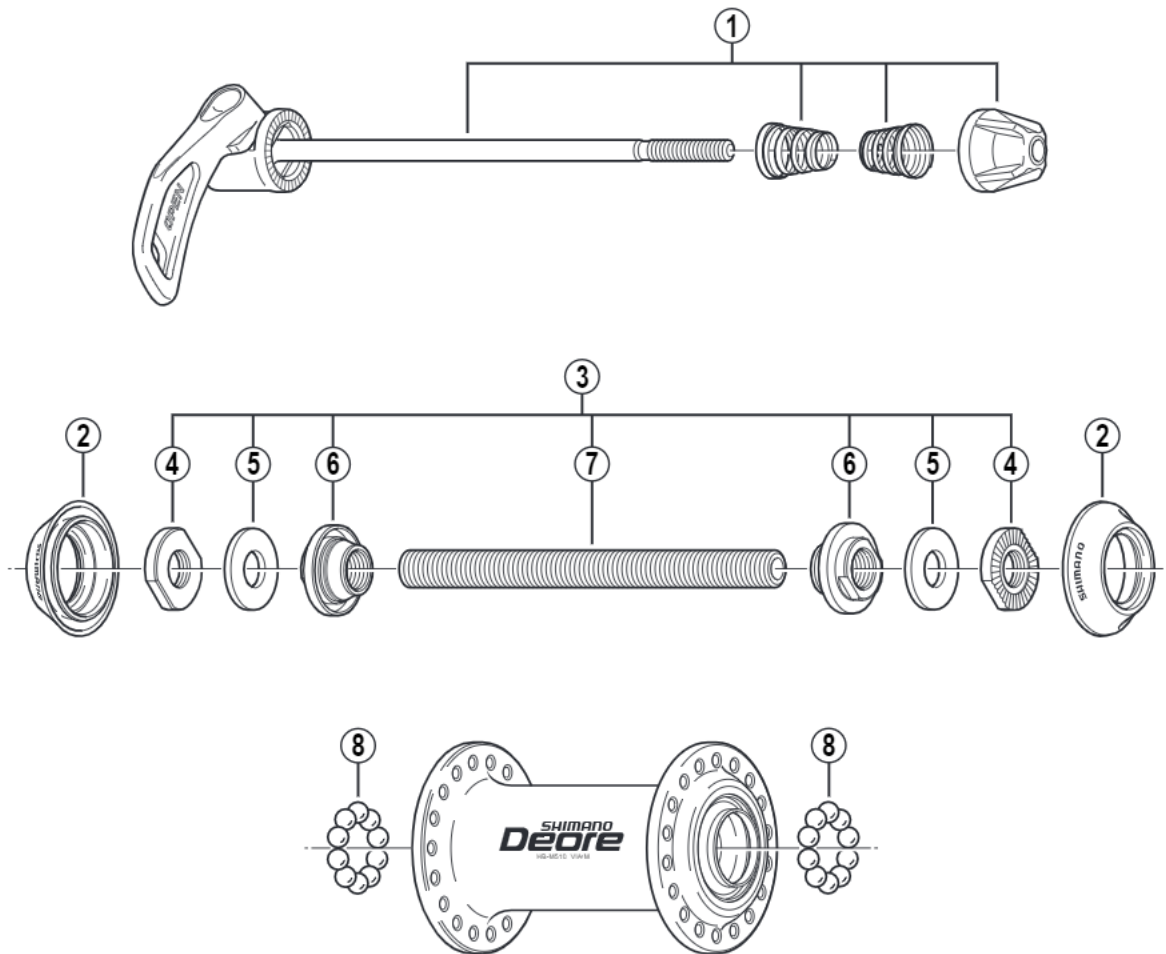
# Spare parts list for after market.

- You may photocopy this sheet and use it as an order form.
- Sie können dieses Blatt kopieren und als Bestellformular verwenden.
- Vous pouvez photocopier cette feuille et l'utiliser comme bon de commande.
- Dit blad kan gecopieerd en als bestelformulier gebruikt worden.
- Potete fotocopiare questo foglio e usarlo come modulo di commissione.

## SHIMANO DEORE Front Hub

# HB-M510-S Silver Version

# HB-M510-L Black Version



Q'TY	ITEM NO.	SHIMANO CODE NO.	DESCRIPTION
	1	Y-24P 98010	Complete Quick Release 133 mm (5-1/4")
	2	Y-24P 03000	Rubber Seal
	3	Y-21L 98010	Complete Hub Axle 108 mm (4-1/4")
	4	Y-21H 08100	Serated Lock Nut 3 mm
	5	Y-21H 10200	Washer 2 mm
	6	Y-21L 98020	Cone (M9 x 11.5 mm) w/Dust Cover
	7	Y-21C 03100	Hub Axle 108 mm (4-1/4")
	8	Y-000 91210	Steel Ball (3/16") 20 pcs.

Over Lock Nut Dimension: 100 mm (3-15/16")

IL/HB Printed in Japan 9907-1894